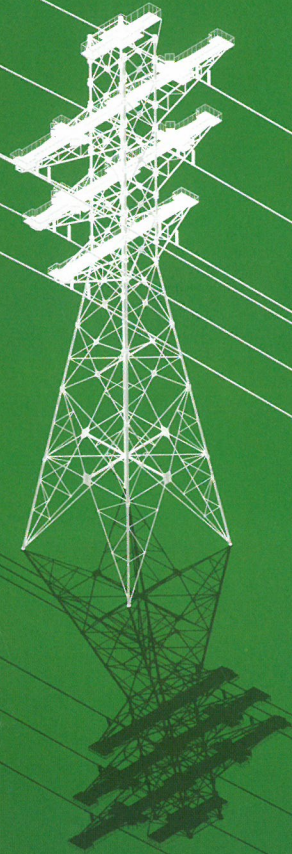




OKLAHOMA'S ELECTRIC  
COOPERATIVES



*Provided by*



OKLAHOMA'S ELECTRIC  
COOPERATIVES

# CO-OP101

Powering the needs of new generations



A **cooperative** is an autonomous association of persons united voluntarily to meet their common economic, social and cultural needs and aspirations through a jointly-owned and democratically controlled enterprise.



All of these aspects combined make co-ops more responsive because members are the owners, and each co-op is accountable to their neighbors and community. While focusing on member needs, cooperatives work for the sustainable development of their communities through programs, services and policies developed by member-elected boards. Cooperatives are grounded on the premise of **neighbors helping neighbors**.



## VALUES OF A COOPERATIVE

- SELF-HELP
- SELF-RESPONSIBILITY
- DEMOCRACY
- EQUALITY
- EQUITY
- SOLIDARITY

## COOPERATIVE PRINCIPLES

In 1994, a set of cooperative principles were agreed upon by the International Cooperative Alliance (ICA) at a conference in Oslo, Norway. Since then, they have largely been regarded as the standards for cooperatives. **See next page for the seven principles and their descriptions.**

## VOLUNTARY & OPEN MEMBERSHIP

Co-ops are voluntary organizations open to all persons able to use their services and willing to accept the responsibilities of membership, without gender, social, racial, political or religious discrimination.

## DEMOCRATIC MEMBER CONTROL

Co-ops are democratic organizations controlled by their members who actively participate in setting their policies and making decisions. Men and women serving as elected representatives are accountable to the membership. Members have equal voting rights. One member, one vote.

## MEMBER ECONOMIC PARTICIPATION

Members contribute equitably to and democratically control the capital of their co-op. At least part of that capital is usually the common property of the co-op. Members usually receive limited compensation, if any, on capital subscribed as a condition of membership.

## AUTONOMY & INDEPENDENCE

Co-ops are autonomous, self-help organizations controlled by their members. If they enter into agreements with other organizations, including governments, or raise capital from external sources, they do so on terms that ensure democratic control by their members and maintain their cooperative autonomy.

## EDUCATION, TRAINING & INFORMATION

Co-ops provide education and training for their members, elected representatives, managers and employees, so they can contribute effectively to the development of their co-ops. They inform the general public - particularly young people and opinion leaders - about the nature and benefits of cooperation.

## COOPERATION AMONG COOPERATIVES

Co-ops serve their members most effectively and strengthen the co-op movement by working together through local, regional, national and international structures.

## CONCERN FOR COMMUNITY

Co-ops work for the sustainable development of their communities through policies approved by their members.



### WORKER COOPERATIVES



A worker cooperative is a cooperative that is owned and self-managed by its workers. This may mean workers making decisions in a democratic fashion or may refer to worker-owners electing management.

### CONSUMER COOPERATIVES



Consumer cooperatives are owned and controlled by consumers. Co-ops have a strong focus on satisfying their members needs and provide a sale service focus on product quality and consumer protection. **(tip: electric cooperatives are consumer co-ops!)**

### PRODUCER COOPERATIVES



Producer cooperatives are engaged in agriculture including farming, fishing and forestry. The co-op members may be farmers, landowners or fishing operations. There are different ways these groups cooperate.

### CREDIT UNIONS



Credit unions are consumer-owned financial services cooperatives in which every depositor becomes a member owner.

### RETAIL OR PURCHASING COOPERATIVES



This is a type of consumer cooperative. Many of these co-ops are owned and governed by independent business owners. These business owners partner together to form national and international co-ops to purchase goods and services at rates that will keep costs low.

### HOUSING COOPERATIVES

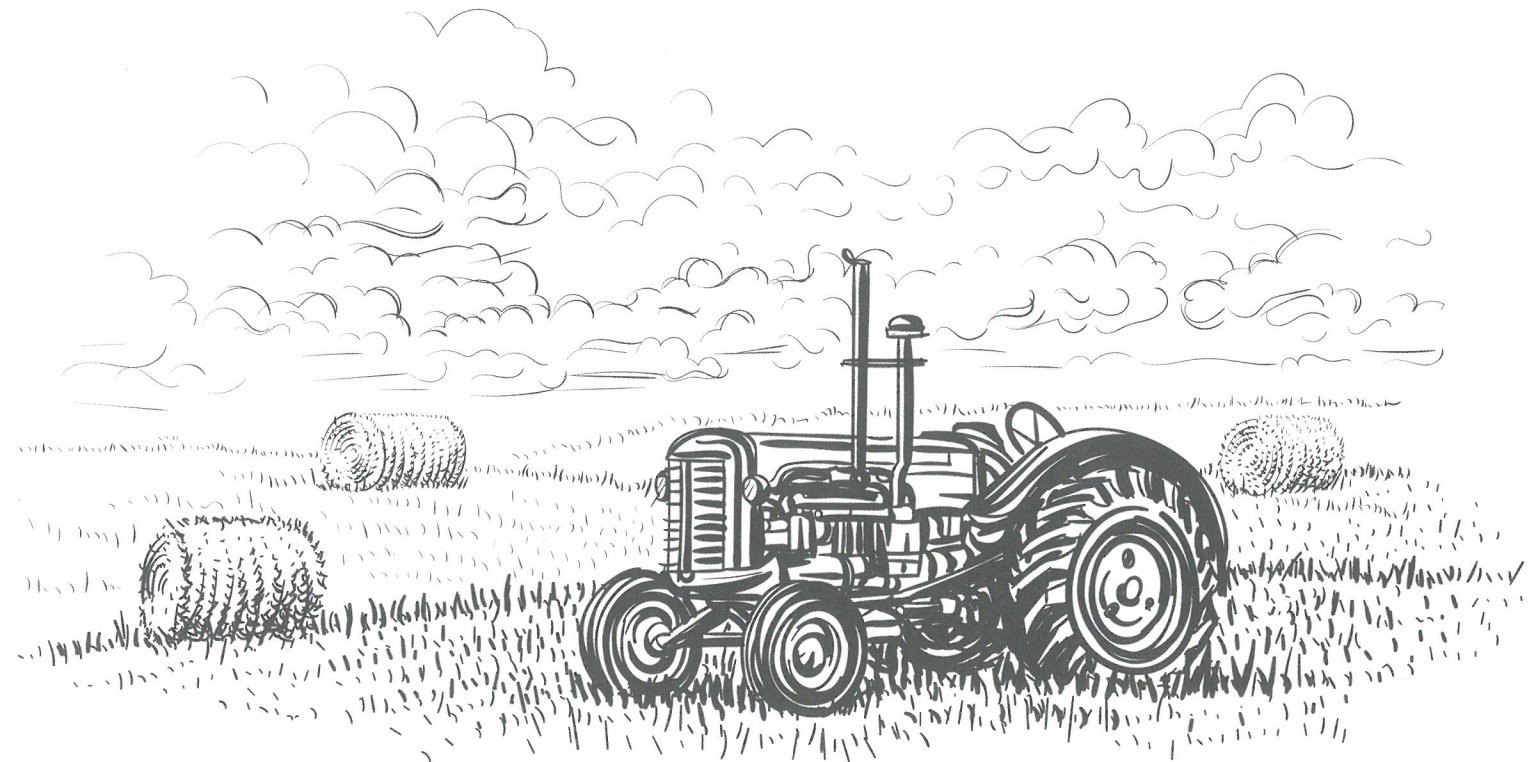


Housing cooperatives are owned by the residents. These can range from single house to apartment complexes.

### MULTI-STAKEHOLDER COOPERATIVES



These cooperatives often create specific roles and rights for the various types of members. For example, this may take the form of a producer/consumer or consumer/worker hybrid co-op. In these cases, the membership fees may vary for the two groups.



9 of 10 rural homes had no electric service.

Wood stoves and washboards were used for cooking and cleaning.

Rural areas could only depend on agriculture for employment, food, etc.

Farmers hand-milked cows by light of kerosene lanterns.

Farmers and ranchers could only work from sunup to sundown.

Factories & businesses only located in cities, where electric power was available.



Reprinted with permission.  
© Copyright NRECA.



## TVA ACT

The Tennessee Valley Authority Act authorized the TVA Board to construct transmission lines to serve “farms and small villages that are not otherwise supplied with electricity at reasonable rates.”

1933

## THE REA

The idea of providing federal assistance to accomplish rural electrification gained ground rapidly when President Roosevelt took office in 1933. He signed Executive Order No. 7037, establishing the **Rural Electrification Administration**. It wasn't until a year later that the Rural Electrification Act was passed and the lending program that became the REA got underway. Within months, it became evident to REA officials that established investor-owned utilities were not interested in using federal loan funds to serve sparsely-populated rural areas. But load applications from farmer-based cooperatives poured in and REA soon realized electric cooperatives would be the entities to make rural electrification a reality for rural citizens.

1935



## ECC ACT

The Electric Cooperative Corporation Act model law that states could adopt to enable the formation and operation of not-for-profit, consumer-owned electric cooperatives.

1937

## POWERED

BY 1953 more than 90 percent of U.S. farms had electricity.

- Rural electric systems in operation doubled
- Consumers being connected tripled
- Miles of energized line grew more than five-fold

1953

**TODAY**  More than 99 percent of U.S. farms have electricity and REA is now known as the Rural Utilities Service (RUS), located within the U.S. Department of Agriculture.



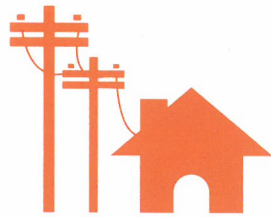
**ELECTRIC CO-OP MEMBERS**

Each consumer of an electric cooperative is a member-owner and has the right to have a vote in the affairs of the co-op, elect directors to serve on a board of trustees and receive an allocated “margin” in the form of capital credits when economically feasible.



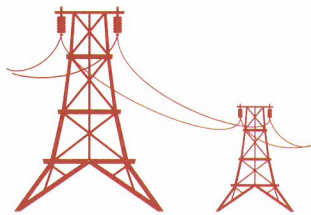
**DISTRIBUTION COOPERATIVES**

Distribution cooperatives provide electric service to member-owners. These cooperatives distribute energy to homes and businesses in rural areas. Distribution cooperatives receive energy from generation and transmission cooperatives.



**GENERATION & TRANSMISSION COOPERATIVES**

These cooperatives provide wholesale power to distribution cooperatives. The types of fuel sources vary from fossil fuels and renewables.



**OKLAHOMA ASSOCIATION OF ELECTRIC CO-OPS**

**NATIONAL RURAL ELECTRIC CO-OP ASSOCIATION**

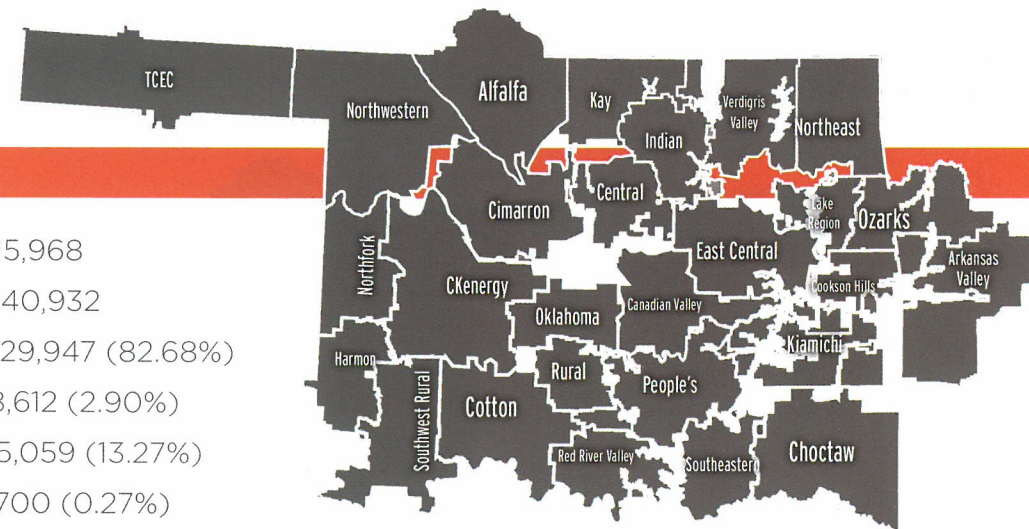
**LENDING BODIES (COBANK, RUS & CFC)**

The **statewide and national associations** provide training and education to employees and board members. Both associations believe in keeping strong connections with the state and the nation’s capitals.

The **lending bodies** such as, Rural Utility Service (RUS) and National Rural Utilities Cooperative finance Corporation (CFC) and CoBank provide funding for distribution and G&Ts cooperatives.

**OPERATING STATISTICS**

Total Miles of Distribution Line .....	115,968
Total Number of Active Meters .....	640,932
Residential .....	529,947 (82.68%)
Seasonal Residential .....	18,612 (2.90%)
Commercial .....	85,059 (13.27%)
Industrial .....	1,700 (0.27%)
Irrigation .....	2,910 (0.45%)

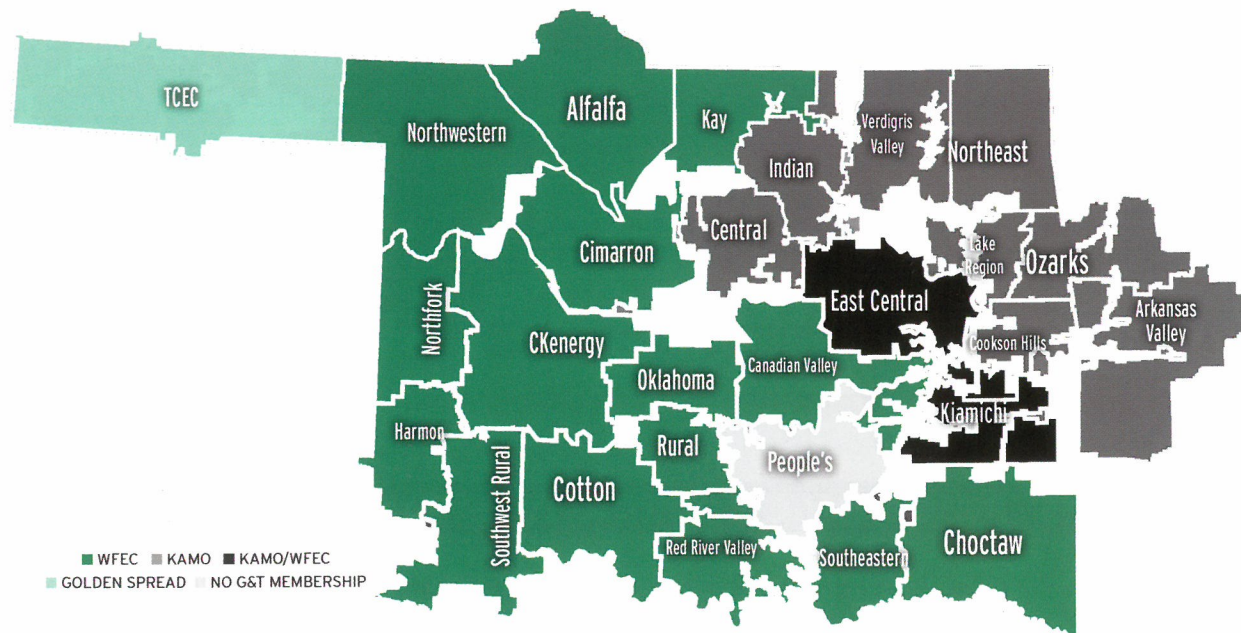


**OKLAHOMA DISTRIBUTION COOPERATIVES FAST FACTS**

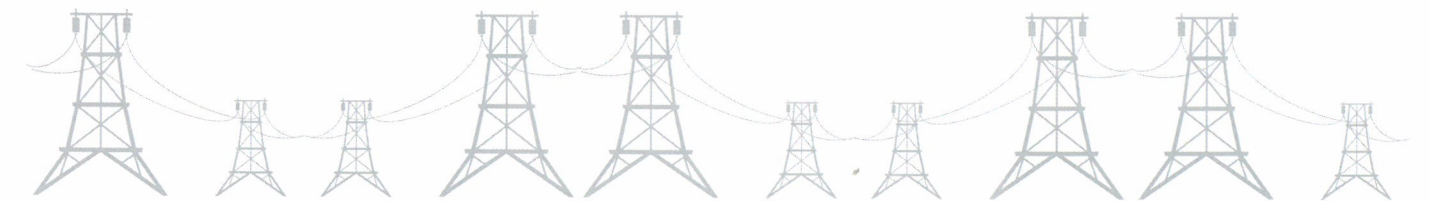
<b>ALFALFA</b> 3,310 miles of line 8,662 active meters 50 full-time employees	<b>COOKSON HILLS</b> 2,938 miles of line 17,822 active meters 53 full-time employees	<b>LAKE REGION</b> 3,088 miles of line 24,708 active meters 86 full-time employees	<b>RED RIVER VALLEY</b> 2,706 miles of line 15,860 active meters 41 full-time employees
<b>ARKANSAS VALLEY</b> 6,502 miles of line 59,275 active meters 152 full-time employees	<b>COTTON</b> 5,168 miles of line 22,124 active meters 90 full-time employees	<b>NORTHEAST OK</b> 5,213 miles of line 39,164 active meters 203 full-time employees	<b>RURAL</b> 2,970 miles of line 11,554 active meters 54 full-time employees
<b>CANADIAN VALLEY</b> 5,259 miles of line 24,554 active meters 65 full-time employees	<b>EAST CENTRAL</b> 6,273 miles of line 33,801 active meters 75 full-time employees	<b>NORTHFORK</b> 2,582 miles of line 6,605 active meters 37 full-time employees	<b>SOUTHEASTERN</b> 2,727 miles of line 14,673 active meters 30 full-time employees
<b>CENTRAL</b> 4,333 miles of line 25,136 active meters 87 full-time employees	<b>HARMON</b> 1,939 miles of line 3,572 active meters 18 full-time employees	<b>NORTHWESTERN</b> 5,000 miles of line 11,860 active meters 56 full-time employees	<b>SOUTHWEST RURAL</b> 3,080 miles of line 7,673 active meters 32 full-time employees
<b>CHOCTAW</b> 3,600 miles of line 18,950 active meters 67 full-time employees	<b>INDIAN</b> 3,498 miles of line 19,343 active meters 85 full-time employees	<b>OKLAHOMA</b> 5,527 miles of line 55,511 active meters 137 full-time employees	<b>TRI-COUNTY (TCEC)</b> 5,022 miles of line 22,696 active meters 107 full-time employees
<b>CIMARRON</b> 4,690 miles of line 16,811 active meters 51 full-time employees	<b>KAY</b> 2,262 miles of line 5,876 active meters 50 full-time employees	<b>OZARKS</b> 1,727 miles of line 74,103 active meters 215 full-time employees	<b>VERDIGRIS VALLEY</b> 4,794 miles of line 36,575 active meters 95 full-time employees
<b>CKENERGY</b> 7,735 miles of line 25,314 active meters 95 full-time employees	<b>KIAMICHI</b> 4,149 miles of line 21,824 active meters 47 full-time employees	<b>PEOPLE'S</b> 4,704 miles of line 22,309 active meters 71 full-time employees	



**OKLAHOMA G&T TERRITORIES**



Oklahoma currently has three Generation and Transmission cooperatives: Golden Spread, KAMO Power and Western Farmers.



**GOLDEN SPREAD (16 MEMBER SYSTEMS)**

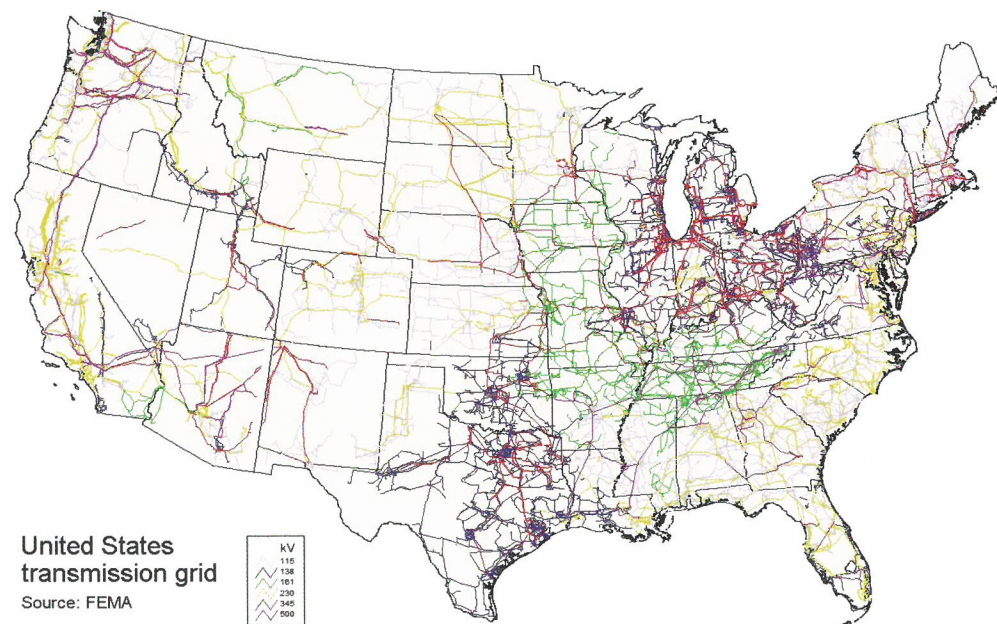
- Headquartered in Amarillo, Texas
- Provides energy to one Oklahoma cooperative (TCEC)
- 15 additional member systems in Texas
- 6 natural gas fired generating units near Denver City, TX
- 18 quick start natural gas engines & 3 quick start natural gas fired combustion turbines.

**TYPES OF FUEL SOURCES**

- Natural Gas
- Coal
- Petroleum
- Nuclear
- Hydropower
- Wind
- Biomass
- Solar
- Geothermal

**KAMO POWER (17 MEMBER SYSTEMS)**

- Headquartered in Vinita, OK
- One of the first regional G&T electric cooperatives formed under the REA in 1936
- Named after four states where it was established to operate
- Provides energy to 8 Oklahoma co-ops
- Other member systems in Arkansas, Kansas and Missouri
- 2,700 miles of high-voltage transmission system and over 275 substations



**TRANSMISSION (THE "GRID")**

United States transmission grid  
Source: FEMA

**WESTERN FARMERS (21 MEMBER SYSTEMS)**

- Headquartered in Anadarko, OK
- Provides energy to 17 Oklahoma co-ops
- Grown into Oklahoma's largest locally owned power supply system.
- Six generating facilities
- 3,700 miles of transmission line and over 330 sub and switch stations
- Developed several wind farms and solar gardens in Oklahoma and New Mexico



Oklahoma Association of Electric Cooperatives is a nonprofit, statewide service association created and voluntarily supported by local electric distribution and G&T cooperatives. **OAEC is comprised of 30 member systems**, 27 in Oklahoma, two Arkansas systems and one Texas system which have a portions of their membership residing in Oklahoma.



## LEGISLATIVE CONNECTIONS

OAEC believes in keeping a strong connection at the Oklahoma State Capitol. The association serves as a liaison with state and national legislative and executive branches of government.

## SAFETY TRAINING

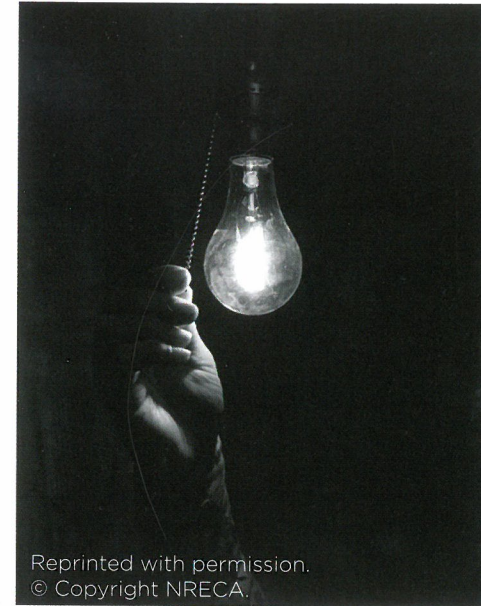
OAEC's Safety and Loss Control department provides training that emphasizes safe working practices for the well being of rural electric cooperative employees, the membership and the public.

## CONCERN FOR COMMUNITY

Each year, Oklahoma's Electric Cooperatives and employees organize, sponsor and volunteer in various community outreach programs, such as Special Olympics, Youth Tour and Energy Camp. This involvement is part of what makes electric cooperatives valuable in communities around Oklahoma.

## OKLAHOMA LIVING MAGAZINE

For nearly 70 years, *Oklahoma Living* has served Oklahoma's rural electric cooperative members by providing information about their local electric co-ops, affordable electricity and Oklahoma's rural lifestyle. Readership has grown to more than 650,000, making the magazine the largest subscription-based monthly publication in Oklahoma.



The National Rural Electric Cooperative Association was founded on March 19, 1942 by 10 men concerned with the problems confronting rural electric cooperatives. They envisioned NRECA would unite rural electric systems under one banner to protect their interests and provide support to help them serve rural America. NRECA is one of the largest rural-oriented cooperative organizations in the United States. **It is the national service organization for more than 900 rural electric systems**, which provide power to more than 42 million people in 47 states.

## NRECA PROGRAMS AND SERVICES

The association provides many programs, services and trainings for electric cooperatives and its employees.

- Business & Technology Strategies
- Communications
- Employee Benefits
- Government Relations
- Market Research
- National Consulting Group
- Safety
- Workforce Management
- Conferences & Education
- Legal and Financial Resources

## TOUCHSTONE ENERGY®

Touchstone Energy® is a nationwide alliance of locally owned and operated electric cooperatives, which collectively provide enhanced services and resources to their residential and business customers.





